



2021 INAUGURAL

FUNDING INITIATIVE

Information session: May 5, 2021



Agenda

PART 1

Introduction

PART 2

Purpose of funding initiative

PART 3

Key dates

PART 4

Evaluation & review

PART 5Q & A: Sandbox Meeting/ Partnerships/
Funding & Focus



Co-Leads



Sarah Allred, PhD
Rutgers University-Camden



Nicole Vaughn, PhD
Rowan University

Introduction

- Established through a state grant to the Rowan University / Rutgers-Camden Board of Governors to integrate the region's medical, educational, research and community assets for the benefit of residents in southern New Jersey
- Improve health and health equity in Southern New Jersey
- Focus on population health, population medicine, public health approaches
- Engaged with the community/community stakeholders



Values

Our values are central to our work.



COLLABORATION

We seek to actively listen, authentically connect and build partnerships that are mutually beneficial to improve health and health equity in the region.



INNOVATION

We approach population health and health equity focused data and projects with an open-mind and seek to explore new ideas that will have a sustainable impact.



IMPACT

We believe that southern New Jersey is a unique and valuable place to live and work. Our work focuses on making an impact that is inclusive and lasting.

Purpose

We serve as a hub for research collaboration, community connection and innovation that improves health and health equity in populations and communities across the region.

1 HEALTH EQUITY

Inaugural funding to reduce health disparities and advance health equity using an academic-community partnership approach

2 EXPAND RESEARCH

Expand research with community impact in the following counties: Burlington, Camden, Gloucester, Cumberland, Salem, Atlantic and Cape May

3 DIVERSE COMMUNITIES

Focus on urban and rural issues

4 DATA HUB & NEW IDEAS

An organized snapshot of relevant data.
Generating new ideas.

5 PARTNERSHIPS

Teams: New (less than 6 months) vs.
Established (6 months or more)

Key Dates

This timeline provides an overview of key dates and deadlines.

KEY INDICATOR	ACTIVITY / PROJECT	DATE
Brief Letter of Intent (LOI)	Submit on the portal	May 31, 2021 by 5 pm
Review of LOIs	By committee and staff	Completed by July 2021
Applicants notified	Invited to participate in Sandbox Meeting	Mid July 2021
Sandbox Meeting	Select LOIs invited to participate	October 1, 2021
Full proposal	Submitted based on feedback from meeting	November 1, 2021
Award decisions	Review by committee and staff	December 15, 2021
Funding released	Projects begin and continue for 12 months	Early 2022
Reporting	internal reporting for all grantees	Spring 2023
Final report	SJIPH to Rowan University-Rutgers Camden Board of Governors	Summer 2023

Evaluation

Projects DO NOT need to identify all academic or community partners at the LOI stage. The Sandbox Meeting will provide opportunities for collaboration and refining the project idea.

FOCUS

What population does the project focus on?

CAPACITY

Does the project build community capacity?

DISPARITIES

Does the project serve to reduce health disparities in the region?

COVID-19

Does it focus on COVID-19 related impacts or disparities, and consider the social determinants of health?

PARTNERSHIP

Will the project generate new partnerships or strengthen existing partnerships for ongoing collaboration?

Review Process

Highest scoring projects will be invited to the Sandbox meeting in October.



REVIEW

All LOIs reviewed by SJIPH and submitted to reviewers



REVIEW TEAM

Reviewer team:

- 2 faculty from Rowan University,
- 2 faculty from Rutgers-Camden,
- 3 community stakeholders



SCORING CRITERIA

Scoring categories/criteria (5-point scale):

- Project Idea
- Team
- Data Sharing Capacity
- Impact in the region (community & scholarly)
- Ongoing sustainability
- Budget



Questions: Sandbox Meeting

- ***What is the Sandbox Meeting?***

The Sandbox Meeting is for LOIs that have been selected by reviewers to advance to the next stage. These projects are deemed promising and the this meeting is intended to serve as a incubator for ideas and research partnerships.

- ***Who is required to attend and will it be in-person?***

Yes, every project must be represented at the Sandbox Meeting by at least 1 team member. The event is anticipated to be in-person event at the Joint Health Sciences Center on October 1, and all COVID-19 related state guidelines will be prioritized and followed.

- ***Will invited projects require Rowan University and Rutgers-Camden researchers?***

All projects will require academic and community partner. Priority will be given to projects that include both Rowan and Rutgers-Camden faculty collaborations and/or those that have academic partners from more than one institution.

Questions: Partners

- ***Who counts as an academic partner?***

Faculty (tenure-track and NTT), post-docs, staff, doctoral candidates (e.g. PhD, MD, DO, EdD)

- ***What units are eligible?***

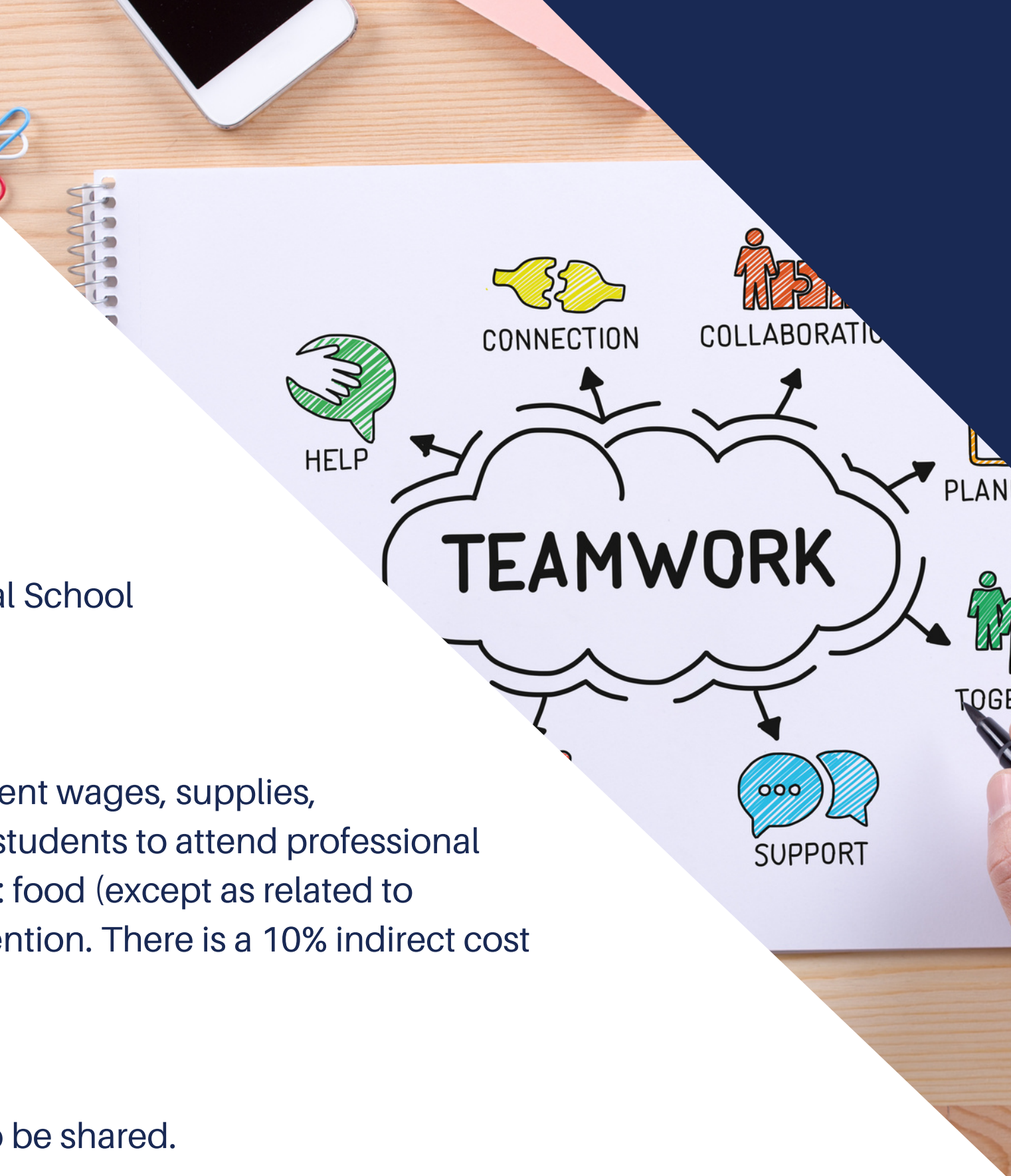
Rutgers-Camden, Rowan University, Rowan School of Medicine, Cooper Medical School of Rowan University

- ***Are there restriction on funds?***

Allowable expenses include: percent effort for PI/Co-PI/project staff, hourly student wages, supplies, materials, equipment, mileage reimbursement for study-related travel, travel for students to attend professional conferences, software, data analysis/evaluation. Non-allowable costs to include: food (except as related to human-subjects research), equipment exceeding \$3000, and publication subvention. There is a 10% indirect cost cap as the funds for this initiative are New Jersey state government dollars.

- ***Will data collected be required to be shared with SJIPH?***

All projects require a data-sharing plan, but not all data collected are required to be shared.





Questions: Funding and Focus

- ***Can this funding initiative support programs (as opposed to Research)?***
Funding can support programs if there is a corresponding contribution to research or data supports the broader mission of the SJIPH.
- ***Does my project have to be COVID-19 related?***
No, but priority will be given to projects that relate to COVID-19 in some way, including addressing health disparities or needs revealed by COVID-19, and providing data on populations impacted by COVID-19.
- ***Does my project have to be in southern New Jersey?***
Yes, all projects must focus on populations or individuals from at least one of the seven counties in the southern New Jersey region outlined.
- ***If my project is invited to the Sandbox Meeting, what are my chances of being funded?***
Our goal is to fund the majority of projects invited to the Sandbox Meeting provided their full proposals address funding criteria and priorities.

Questions: Misc.

- ***Is the funding for this initiative from federal or state government dollars? If so, are there restrictions/requirements tied to that government agency that applicants should consider?***

The funds for this initiative are New Jersey state government dollars. There is a 10% indirect cost cap.

- ***Are there names of previous grant award winners and the projects they submitted?***

This is the inaugural funding initiative for SJIPH. There have not been previous grant awardees.

- ***Does this initiative intend to focus exclusively on research at this stage or would there be an opportunity to fund application-based initiatives that align with the Institute's mission?***

This initiative is looking for projects that engage community stakeholders and academic partners. While this opportunity is open to application-based or programmatic initiatives, there should be a research question and data that can be generated that could advance understanding and exploration of a health-related issue.

- ***Are there health issues the funder is prioritizing?***

No, at this stage all health issues and ideas are welcomed for this initiative as long as it meets the criteria outlined in the LOI. There are no restrictions on type of health issue.

Q&A

Questions can also be submitted to:
info@sjiph.org





Thank you.
www.sjiph.org

